



4A

NORTH CAROLINA AVENUE VALUE \$300

First, solve the following anagrams, which are all things associated with a Rally.

- 1 KIND GRIN (8)
- 2 AH STUD TIPS (6,4)
- 3 MARTIAN PALSY (5,7)
- 4 SLACKING DUD FATE (4,7,4)
- 5 ROSY HALL (5,3)
- 6 RAVEN DENT (6,3)
- 7 SAGE CLUB(4,4)
- 8 WORK BANE DELAYED (5,3,7)

Next write the answers in the empty boxes (a) to (h) below. You'll have to work out which answer goes where. For those boxes which are numbered, copy the letter to the Solution Grid to discover your next clue.

a 10 .. 20 15 12 ..

b 23 06 02

c 13 .. 22 25

d 09 18 .. 23 29 3

e 21 30 .. 34

f .. 07 08 .. 04 27 .. 35 14

g 16 .. 28 26 .. 17

h .. 24 .. 01 11 .. 33 31

Solution Grid

| | | | | | | | | | |
|----|----|----|----|----|----|----|----|----|----|
| 01 | 02 | 03 | 04 | 05 | 06 | 07 | 08 | 09 | 10 |
|----|----|----|----|----|----|----|----|----|----|

| | | | | | | | | | | | | |
|----|----|----|----|----|----|----|----|----|----|----|----|----|
| 11 | 12 | 13 | 14 | 15 | 16 | 17 | 18 | 19 | 20 | 21 | 22 | 23 |
|----|----|----|----|----|----|----|----|----|----|----|----|----|

| | | | | | | | | | | | |
|----|----|----|----|----|----|----|----|----|----|----|----|
| 24 | 25 | 26 | 27 | 28 | 29 | 30 | 31 | 32 | 33 | 34 | 35 |
|----|----|----|----|----|----|----|----|----|----|----|----|

Team Position

| | | 01 | 02 | 03 | 04 | 05 | 06 | 07 | 08 | 09 | 10 |
|--------------------------------------|----|-------|-------|-------|-------|-------|-------|-------|-------|------|------|
| # o f T e a m s | 01 | \$300 | | | | | | | | | |
| | 02 | \$330 | \$270 | | | | | | | | |
| | 03 | \$360 | \$300 | \$240 | | | | | | | |
| | 04 | \$390 | \$330 | \$270 | \$210 | | | | | | |
| | 05 | \$420 | \$360 | \$300 | \$240 | \$180 | | | | | |
| | 06 | \$450 | \$390 | \$330 | \$270 | \$210 | \$150 | | | | |
| | 07 | \$480 | \$420 | \$360 | \$300 | \$240 | \$180 | \$120 | | | |
| | 08 | \$510 | \$450 | \$390 | \$330 | \$270 | \$210 | \$150 | \$90 | | |
| | 09 | \$540 | \$480 | \$420 | \$360 | \$300 | \$240 | \$180 | \$120 | \$60 | |
| | 10 | \$570 | \$510 | \$450 | \$390 | \$330 | \$270 | \$210 | \$150 | \$90 | \$30 |



5A#

NORTH LAMAR

VALUE \$220



| | | Team Position | | | | | | | | | |
|--------------------------------------|----|---------------|-------|-------|-------|-------|-------|------|------|------|------|
| | | 01 | 02 | 03 | 04 | 05 | 06 | 07 | 08 | 09 | 10 |
| # o f T e a m s | 01 | \$120 | | | | | | | | | |
| | 02 | \$132 | \$108 | | | | | | | | |
| | 03 | \$144 | \$120 | \$96 | | | | | | | |
| | 04 | \$156 | \$132 | \$108 | \$84 | | | | | | |
| | 05 | \$168 | \$144 | \$120 | \$96 | \$72 | | | | | |
| | 06 | \$180 | \$156 | \$132 | \$108 | \$84 | \$60 | | | | |
| | 07 | \$192 | \$168 | \$144 | \$120 | \$96 | \$72 | \$48 | | | |
| | 08 | \$204 | \$180 | \$156 | \$132 | \$108 | \$84 | \$60 | \$36 | | |
| | 09 | \$216 | \$192 | \$168 | \$144 | \$120 | \$96 | \$72 | \$48 | \$24 | |
| | 10 | \$228 | \$204 | \$180 | \$156 | \$132 | \$108 | \$84 | \$60 | \$36 | \$12 |



7A

NEW YORK AVENUE VALUE \$300



| | | Team Position | | | | | | | | | |
|--------------------------------------|----|---------------|-------|-------|-------|-------|-------|------|------|------|------|
| | | 01 | 02 | 03 | 04 | 05 | 06 | 07 | 08 | 09 | 10 |
| # o f T e a m s | 01 | \$140 | | | | | | | | | |
| | 02 | \$154 | \$126 | | | | | | | | |
| | 03 | \$168 | \$140 | \$112 | | | | | | | |
| | 04 | \$182 | \$154 | \$126 | \$98 | | | | | | |
| | 05 | \$196 | \$168 | \$140 | \$112 | \$84 | | | | | |
| | 06 | \$210 | \$182 | \$154 | \$126 | \$98 | \$70 | | | | |
| | 07 | \$224 | \$196 | \$168 | \$140 | \$112 | \$84 | \$56 | | | |
| | 08 | \$238 | \$210 | \$182 | \$154 | \$126 | \$98 | \$70 | \$42 | | |
| | 09 | \$252 | \$224 | \$196 | \$168 | \$140 | \$112 | \$84 | \$56 | \$28 | |
| | 10 | \$266 | \$238 | \$210 | \$182 | \$154 | \$126 | \$98 | \$70 | \$42 | \$14 |

TITLE DEED

AetherSphere

| | |
|-------------------|-----------------|
| Rent: | \$2 |
| With 1 House: | \$10 |
| With 2 Houses: | \$30 |
| With 3 Houses: | \$90 |
| With 4 Houses: | \$160 |
| With Hotel: | \$250 |
| Mortgage Value: | \$30 |
| Each house costs: | \$50 |
| Hotels cost: | 4 houses + \$50 |

If player owns all the lots of any color group, the rent is doubled on unimproved Lots in that group.

Copyright (L) 1999 Free Monopoly Foundation

AetherSphere

•

Mortgaged
for \$30

•

Card must be turned this side up if property is mortgaged.

TITLE DEED

Lush Creations

| | |
|-------------------|-----------------|
| Rent: | \$4 |
| With 1 House: | \$20 |
| With 2 Houses: | \$60 |
| With 3 Houses: | \$180 |
| With 4 Houses: | \$320 |
| With Hotel: | \$450 |
| Mortgage Value: | \$30 |
| Each house costs: | \$50 |
| Hotels cost: | 4 houses + \$50 |

If player owns all the lots of any color group, the rent is doubled on unimproved Lots in that group.

Copyright (L) 1999 Free Monopoly Foundation

Lush Creations

•

Mortgaged
for \$30

•

Card must be turned this side up if property is mortgaged.

TITLE DEED

Motorola

| | |
|-------------------|-----------------|
| Rent: | \$6 |
| With 1 House: | \$30 |
| With 2 Houses: | \$90 |
| With 3 Houses: | \$270 |
| With 4 Houses: | \$400 |
| With Hotel: | \$550 |
| Mortgage Value: | \$50 |
| Each house costs: | \$50 |
| Hotels cost: | 4 houses + \$50 |

If player owns all the lots of any color group, the rent is doubled on unimproved Lots in that group.

Copyright (L) 1999 Free Monopoly Foundation

Motorola

•

Mortgaged
for \$50

•

Card must be turned this side up if property is mortgaged.

TITLE DEED

Compaq

| | |
|-------------------|-----------------|
| Rent: | \$6 |
| With 1 House: | \$30 |
| With 2 Houses: | \$90 |
| With 3 Houses: | \$270 |
| With 4 Houses: | \$400 |
| With Hotel: | \$550 |
| Mortgage Value: | \$50 |
| Each house costs: | \$50 |
| Hotels cost: | 4 houses + \$50 |

If player owns all the lots of any color group, the rent is doubled on unimproved Lots in that group.

Copyright (L) 1999 Free Monopoly Foundation

Compaq

•

Mortgaged
for \$50

•

Card must be turned this side up if
property is mortgaged.

TITLE DEED

Dell

| | |
|-------------------|-----------------|
| Rent: | \$8 |
| With 1 House: | \$40 |
| With 2 Houses: | \$100 |
| With 3 Houses: | \$300 |
| With 4 Houses: | \$450 |
| With Hotel: | \$600 |
| Mortgage Value: | \$60 |
| Each house costs: | \$50 |
| Hotels cost: | 4 houses + \$50 |

If player owns all the lots of any color group, the rent is doubled on unimproved Lots in that group.

Copyright (L) 1999 Free Monopoly Foundation

Dell

•

Mortgaged
for \$60

•

Card must be turned this side up if
property is mortgaged.

TITLE DEED

Netscape

| | |
|-------------------|------------------|
| Rent: | \$10 |
| With 1 House: | \$50 |
| With 2 Houses: | \$150 |
| With 3 Houses: | \$450 |
| With 4 Houses: | \$625 |
| With Hotel: | \$750 |
| Mortgage Value: | \$70 |
| Each house costs: | \$100 |
| Hotels cost: | 4 houses + \$100 |

If player owns all the lots of any color group, the rent is doubled on unimproved Lots in that group.

Copyright (L) 1999 Free Monopoly Foundation

Netscape

•

Mortgaged
for \$70

•

Card must be turned this side up if
property is mortgaged.

TITLE DEED

Oracle

| | |
|-------------------|------------------|
| Rent: | \$10 |
| With 1 House: | \$50 |
| With 2 Houses: | \$150 |
| With 3 Houses: | \$450 |
| With 4 Houses: | \$625 |
| With Hotel: | \$750 |
| Mortgage Value: | \$70 |
| Each house costs: | \$100 |
| Hotels cost: | 4 houses + \$100 |

If player owns all the lots of any color group, the rent is doubled on unimproved Lots in that group.

Copyright (L) 1999 Free Monopoly Foundation

Oracle

•

Mortgaged
for \$70

•

Card must be turned this side up if
property is mortgaged.

TITLE DEED

Adobe

| | |
|-------------------|------------------|
| Rent: | \$12 |
| With 1 House: | \$60 |
| With 2 Houses: | \$180 |
| With 3 Houses: | \$500 |
| With 4 Houses: | \$700 |
| With Hotel: | \$900 |
| Mortgage Value: | \$80 |
| Each house costs: | \$100 |
| Hotels cost: | 4 houses + \$100 |

If player owns all the lots of any color group, the rent is doubled on unimproved Lots in that group.

Copyright (L) 1999 Free Monopoly Foundation

Adobe

•

Mortgaged
for \$80

•

Card must be turned this side up if
property is mortgaged.

TITLE DEED

Novell

| | |
|-------------------|------------------|
| Rent: | \$14 |
| With 1 House: | \$70 |
| With 2 Houses: | \$200 |
| With 3 Houses: | \$550 |
| With 4 Houses: | \$750 |
| With Hotel: | \$950 |
| Mortgage Value: | \$90 |
| Each house costs: | \$100 |
| Hotels cost: | 4 houses + \$100 |

If player owns all the lots of any color group, the rent is doubled on unimproved Lots in that group.

Copyright (L) 1999 Free Monopoly Foundation

Novell

•

Mortgaged
for \$90

•

Card must be turned this side up if
property is mortgaged.

TITLE DEED

Cisco

| | |
|-------------------|------------------|
| Rent: | \$14 |
| With 1 House: | \$70 |
| With 2 Houses: | \$200 |
| With 3 Houses: | \$550 |
| With 4 Houses: | \$750 |
| With Hotel: | \$950 |
| Mortgage Value: | \$90 |
| Each house costs: | \$100 |
| Hotels cost: | 4 houses + \$100 |

If player owns all the lots of any color group, the rent is doubled on unimproved Lots in that group.

Copyright (L) 1999 Free Monopoly Foundation

Cisco

•

Mortgaged
for \$90

•

Card must be turned this side up if
property is mortgaged.

TITLE DEED

3Com

| | |
|-------------------|------------------|
| Rent: | \$16 |
| With 1 House: | \$80 |
| With 2 Houses: | \$220 |
| With 3 Houses: | \$600 |
| With 4 Houses: | \$800 |
| With Hotel: | \$1000 |
| Mortgage Value: | \$100 |
| Each house costs: | \$100 |
| Hotels cost: | 4 houses + \$100 |

If player owns all the lots of any color group, the rent is doubled on unimproved Lots in that group.

Copyright (L) 1999 Free Monopoly Foundation

3Com

•

Mortgaged
for \$100

•

Card must be turned this side up if
property is mortgaged.

TITLE DEED

Xerox

| | |
|-------------------|------------------|
| Rent: | \$18 |
| With 1 House: | \$90 |
| With 2 Houses: | \$250 |
| With 3 Houses: | \$700 |
| With 4 Houses: | \$875 |
| With Hotel: | \$1050 |
| Mortgage Value: | \$110 |
| Each house costs: | \$150 |
| Hotels cost: | 4 houses + \$150 |

If player owns all the lots of any color group, the rent is doubled on unimproved Lots in that group.

Copyright (L) 1999 Free Monopoly Foundation

Xerox

•

Mortgaged
for \$110

•

Card must be turned this side up if
property is mortgaged.

TITLE DEED

SGI

| | |
|-------------------|------------------|
| Rent: | \$20 |
| With 1 House: | \$100 |
| With 2 Houses: | \$300 |
| With 3 Houses: | \$750 |
| With 4 Houses: | \$925 |
| With Hotel: | \$1100 |
| Mortgage Value: | \$120 |
| Each house costs: | \$150 |
| Hotels cost: | 4 houses + \$150 |

If player owns all the lots of any color group, the rent is doubled on unimproved Lots in that group.

Copyright (L) 1999 Free Monopoly Foundation

SGI

•

Mortgaged
for \$120

•

Card must be turned this side up if
property is mortgaged.

TITLE DEED

Apple

| | |
|-------------------|------------------|
| Rent: | \$18 |
| With 1 House: | \$90 |
| With 2 Houses: | \$250 |
| With 3 Houses: | \$700 |
| With 4 Houses: | \$875 |
| With Hotel: | \$1050 |
| Mortgage Value: | \$110 |
| Each house costs: | \$150 |
| Hotels cost: | 4 houses + \$150 |

If player owns all the lots of any color group, the rent is doubled on unimproved Lots in that group.

Copyright (L) 1999 Free Monopoly Foundation

Apple

•

Mortgaged
for \$110

•

Card must be turned this side up if
property is mortgaged.

TITLE DEED

Real Networks

| | |
|-------------------|------------------|
| Rent: | \$22 |
| With 1 House: | \$110 |
| With 2 Houses: | \$330 |
| With 3 Houses: | \$800 |
| With 4 Houses: | \$975 |
| With Hotel: | \$1150 |
| Mortgage Value: | \$130 |
| Each house costs: | \$150 |
| Hotels cost: | 4 houses + \$150 |

If player owns all the lots of any color group, the rent is doubled on unimproved Lots in that group.

Copyright (L) 1999 Free Monopoly Foundation

Real Networks

•

Mortgaged
for \$130

•

Card must be turned this side up if
property is mortgaged.

TITLE DEED

Amazon

| | |
|-------------------|------------------|
| Rent: | \$22 |
| With 1 House: | \$110 |
| With 2 Houses: | \$330 |
| With 3 Houses: | \$800 |
| With 4 Houses: | \$975 |
| With Hotel: | \$1150 |
| Mortgage Value: | \$130 |
| Each house costs: | \$150 |
| Hotels cost: | 4 houses + \$150 |

If player owns all the lots of any color group, the rent is doubled on unimproved Lots in that group.

Copyright (L) 1999 Free Monopoly Foundation

Amazon

•

Mortgaged
for \$130

•

Card must be turned this side up if
property is mortgaged.

TITLE DEED

Yahoo

| | |
|-------------------|------------------|
| Rent: | \$24 |
| With 1 House: | \$120 |
| With 2 Houses: | \$360 |
| With 3 Houses: | \$850 |
| With 4 Houses: | \$1025 |
| With Hotel: | \$1200 |
| Mortgage Value: | \$140 |
| Each house costs: | \$150 |
| Hotels cost: | 4 houses + \$150 |

If player owns all the lots of any color group, the rent is doubled on unimproved Lots in that group.

Copyright (L) 1999 Free Monopoly Foundation

Yahoo

•

Mortgaged
for \$140

•

Card must be turned this side up if
property is mortgaged.

TITLE DEED

HP

| | |
|-------------------|------------------|
| Rent: | \$26 |
| With 1 House: | \$130 |
| With 2 Houses: | \$390 |
| With 3 Houses: | \$900 |
| With 4 Houses: | \$1100 |
| With Hotel: | \$1275 |
| Mortgage Value: | \$150 |
| Each house costs: | \$200 |
| Hotels cost: | 4 houses + \$200 |

If player owns all the lots of any color group, the rent is doubled on unimproved Lots in that group.

Copyright (L) 1999 Free Monopoly Foundation

HP

•

Mortgaged
for \$150

•

Card must be turned this side up if
property is mortgaged.

TITLE DEED

IBM

| | |
|-------------------|------------------|
| Rent: | \$26 |
| With 1 House: | \$130 |
| With 2 Houses: | \$390 |
| With 3 Houses: | \$900 |
| With 4 Houses: | \$110 |
| With Hotel: | \$1275 |
| Mortgage Value: | \$150 |
| Each house costs: | \$200 |
| Hotels cost: | 4 houses + \$200 |

If player owns all the lots of any color group, the rent is doubled on unimproved Lots in that group.

Copyright (L) 1999 Free Monopoly Foundation

IBM

•

Mortgaged
for \$150

•

Card must be turned this side up if
property is mortgaged.

TITLE DEED

Sun

| | |
|-------------------|------------------|
| Rent: | \$28 |
| With 1 House: | \$150 |
| With 2 Houses: | \$450 |
| With 3 Houses: | \$1000 |
| With 4 Houses: | \$1200 |
| With Hotel: | \$1400 |
| Mortgage Value: | \$160 |
| Each house costs: | \$200 |
| Hotels cost: | 4 houses + \$200 |

If player owns all the lots of any color group, the rent is doubled on unimproved Lots in that group.

Copyright (L) 1999 Free Monopoly Foundation

Sun

•

Mortgaged
for \$160

•

Card must be turned this side up if
property is mortgaged.

TITLE DEED

Intel

| | |
|-------------------|------------------|
| Rent: | \$35 |
| With 1 House: | \$175 |
| With 2 Houses: | \$500 |
| With 3 Houses: | \$1100 |
| With 4 Houses: | \$1300 |
| With Hotel: | \$1500 |
| Mortgage Value: | \$175 |
| Each house costs: | \$200 |
| Hotels cost: | 4 houses + \$200 |

If player owns all the lots of any color group, the rent is doubled on unimproved Lots in that group.

Copyright (L) 1999 Free Monopoly Foundation

Intel

•

Mortgaged
for \$175

•

Card must be turned this side up if
property is mortgaged.

TITLE DEED
Microsoft

| | |
|-------------------|------------------|
| Rent: | \$50 |
| With 1 House: | \$200 |
| With 2 Houses: | \$600 |
| With 3 Houses: | \$1400 |
| With 4 Houses: | \$1700 |
| With Hotel: | \$2000 |
| Mortgage Value: | \$200 |
| Each house costs: | \$200 |
| Hotels cost: | 4 houses + \$200 |

If player owns all the lots of any color group,
the rent is doubled on unimproved Lots in that group.

Copyright (L) 1999 Free Monopoly Foundation

Microsoft

•

Mortgaged
for \$200

•

Card must be turned this side up if
property is mortgaged.

Open Sources



Release Old Buggy Software Under a New Name, collect \$50 from every player for upgrade license fee.

Open Sources



You take over a small company, fire everyone immediately, and find \$100 in a desk drawer.

Open Sources



From sale of banner ads you get \$45.

Open Sources



You have won second prize in a rigged benchmark. You didn't cheat hard enough. Collect \$10.

Open Sources



Reboot to the Start menu (Collect \$200).

Open Sources



You are assessed for Y2K upgrades. \$40 per desktop, \$115 per server.

Open Sources



Pentium division error in your favor. Collect \$200.

Open Sources



Sell your customer database and personality profiles to spammers for \$20.

Open Sources



Goto Reinstall Windows. Reboot directly to reinstall. Do not pass Start. Do not collect \$200.

Open Sources



Pie in your face! Pay drycleaners \$100.

Open Sources



Your customers are so fanatical,
the IRS classified you as a church.
Collect \$20 income tax refund.

Open Sources



Golden Parachute deploys.
Collect \$100.

Open Sources



Stock options mature.
Collect \$100.

Open Sources



Pay Domain Name Registration Fee of \$150.

Open Sources



Reinstall Windows free.
This card may be kept until needed,
or sold.

Open Sources



Cracker finds massive security hole
in your newly released software.
Pay \$50 hush money.

Download



You've been elected Chief Executive Officer.
Bribe each player \$50.

Download



Advance token to the
nearest ISP and
pay owner Twice the
Rental to which he/she is otherwise entitled.
If ISP is UNOWNED,
you may buy it from the Bank.

Download



Get a little flaccid for Microsoft.
Advance token to Microsoft.

Download



Advance token to
nearest network.
If UNOWNED you
may buy it from the Bank.
If OWNED, throw dice and pay owner
a total ten times the amount thrown.

Download



Make Y2K Upgrades For All Your Companies.
For each desktop pay \$25.
For each server \$100.

Download



This card may be kept until needed, or sold.
Reinstall Windows free.

Download



Spell diferent.
Advance to Apple.

Download



Advance token to the
nearest ISP and
pay owner Twice the
Rental to which he/she is otherwise entitled.
If ISP is UNOWNED,
you may buy it from the Bank.

Download



Advance to Netscape.
If you pass Go, collect \$200.

Download



Go back 3 places.

Download



Your stock options mature.
Collect \$150.

Download



Advance to Start.
(Collect \$200.)

Download



Go To Hell on AOL.
If you pass Start collect \$200.

Download



Pay Net Day tax of \$15.

Download

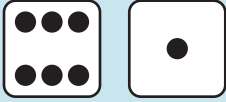


Go directly to Reinstall Windows.
Do not pass Start,
do not collect \$200.

Download



Software developers pay you
protection fee of \$50.



5A#

CONNECTICUT AVENUE

VALUE \$120

I ended up lost on Connecticut Drive. I was looking for some kind of sign and Gin was the path I chose to find it. Sure, I knew guys like Lamar that took it too far, but I was determined to find a different history.

| | | Team Position | | | | | | | | | |
|--------------------------------------|----|---------------|-------|-------|-------|-------|-------|------|------|------|------|
| | | 01 | 02 | 03 | 04 | 05 | 06 | 07 | 08 | 09 | 10 |
| # o f T e a m s | 01 | \$120 | | | | | | | | | |
| | 02 | \$132 | \$108 | | | | | | | | |
| | 03 | \$144 | \$120 | \$96 | | | | | | | |
| | 04 | \$156 | \$132 | \$108 | \$84 | | | | | | |
| | 05 | \$168 | \$144 | \$120 | \$96 | \$72 | | | | | |
| | 06 | \$180 | \$156 | \$132 | \$108 | \$84 | \$60 | | | | |
| | 07 | \$192 | \$168 | \$144 | \$120 | \$96 | \$72 | \$48 | | | |
| | 08 | \$204 | \$180 | \$156 | \$132 | \$108 | \$84 | \$60 | \$36 | | |
| | 09 | \$216 | \$192 | \$168 | \$144 | \$120 | \$96 | \$72 | \$48 | \$24 | |
| | 10 | \$228 | \$204 | \$180 | \$156 | \$132 | \$108 | \$84 | \$60 | \$36 | \$12 |



6A#

BARTON CREEK GREENBELT VALUE \$140

To get to this place you must

SPOT A FECA TAXI

on the Highway,
but remember it's
a \$2000 fine if you
litter or dump

here

A COMP

Team Position

| # | 01 | 02 | 03 | 04 | 05 | 06 | 07 | 08 | 09 | 10 |
|----|-------|-------|-------|-------|-------|-------|------|------|------|------|
| 01 | \$140 | | | | | | | | | |
| 02 | \$154 | \$126 | | | | | | | | |
| 03 | \$168 | \$140 | \$112 | | | | | | | |
| 04 | \$182 | \$180 | \$270 | \$98 | | | | | | |
| 05 | \$196 | \$220 | \$300 | \$240 | \$84 | | | | | |
| 06 | \$210 | \$260 | \$330 | \$270 | \$210 | \$70 | | | | |
| 07 | \$224 | \$300 | \$360 | \$300 | \$240 | \$84 | \$56 | | | |
| 08 | \$238 | \$340 | \$390 | \$330 | \$270 | \$98 | \$70 | \$42 | | |
| 09 | \$252 | \$380 | \$420 | \$360 | \$300 | \$112 | \$84 | \$56 | \$28 | |
| 10 | \$266 | \$420 | \$450 | \$390 | \$330 | \$126 | \$98 | \$70 | \$42 | \$14 |



6A#

BARTON CREEK GREENBELT VALUE \$140

To get to this place you must

SPOT A FECAL TAXI

on the Highway,
but remember it's
a \$2000 fine if you
litter or dump

here

A COMP

Team Position

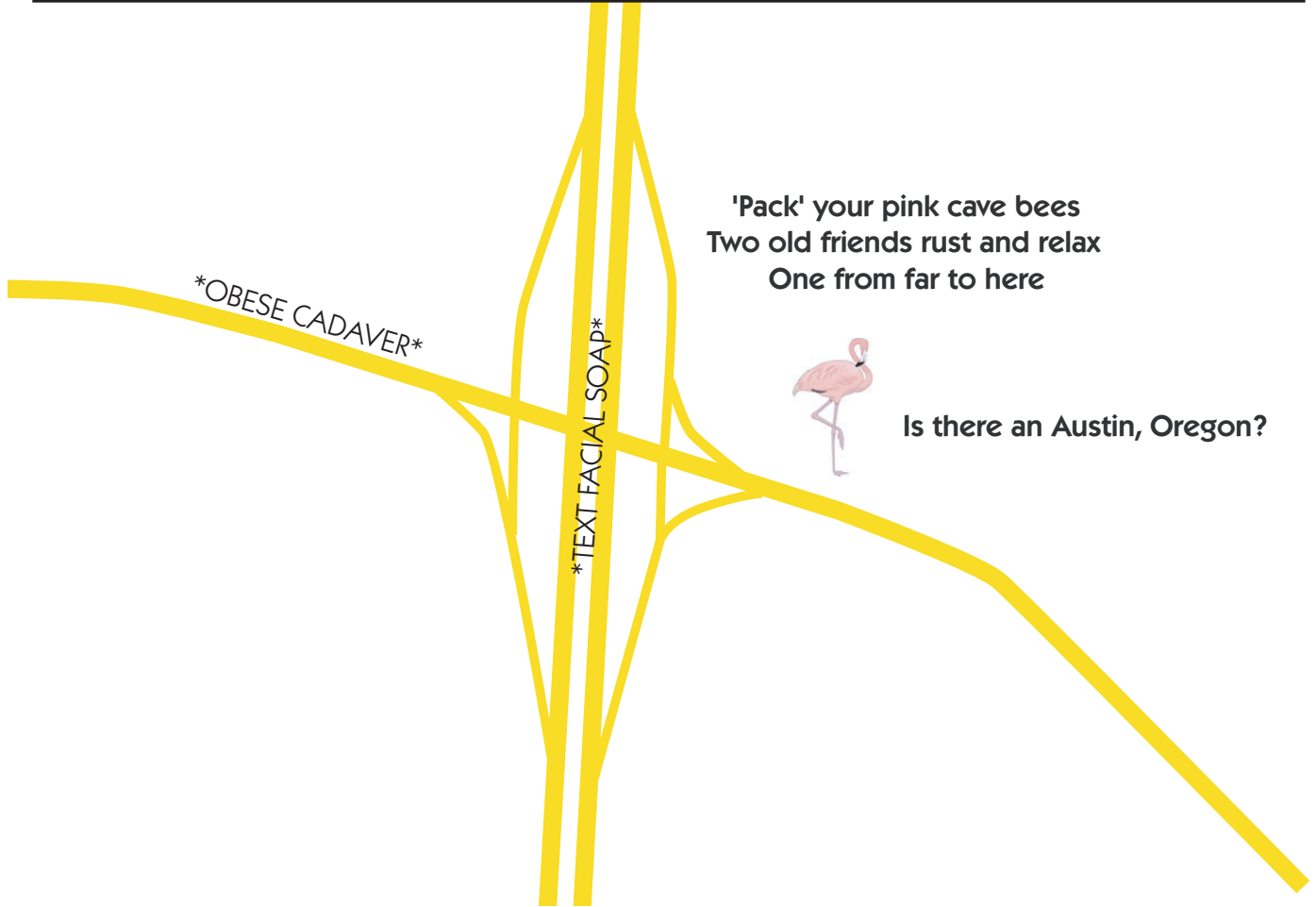
| | | 01 | 02 | 03 | 04 | 05 | 06 | 07 | 08 | 09 | 10 |
|--------------------------------------|----|-------|-------|-------|-------|-------|-------|------|------|------|------|
| # o f T e a m s | 01 | \$140 | | | | | | | | | |
| | 02 | \$154 | \$126 | | | | | | | | |
| | 03 | \$168 | \$140 | \$112 | | | | | | | |
| | 04 | \$182 | \$154 | \$126 | \$98 | | | | | | |
| | 05 | \$196 | \$168 | \$140 | \$112 | \$84 | | | | | |
| | 06 | \$210 | \$182 | \$154 | \$126 | \$98 | \$70 | | | | |
| | 07 | \$224 | \$196 | \$168 | \$140 | \$112 | \$84 | \$56 | | | |
| | 08 | \$238 | \$210 | \$182 | \$154 | \$126 | \$98 | \$70 | \$42 | | |
| | 09 | \$252 | \$224 | \$196 | \$168 | \$140 | \$112 | \$84 | \$56 | \$28 | |
| | 10 | \$266 | \$238 | \$210 | \$182 | \$154 | \$126 | \$98 | \$70 | \$42 | \$14 |



6A#

BEE CAVES ROAD

VALUE \$180



'Pack' your pink cave bees
Two old friends rust and relax
One from far to here



Is there an Austin, Oregon?

Team Position

| | | 1 | 2 | 3 | 4 | 5 | 6 | 7 |
|---|---|-------|-------|-------|-------|-------|-------|------|
| # | 1 | \$180 | | | | | | |
| | 2 | \$198 | \$162 | | | | | |
| T | 3 | \$216 | \$180 | \$144 | | | | |
| e | 4 | \$234 | \$198 | \$162 | \$126 | | | |
| a | 5 | \$252 | \$216 | \$180 | \$144 | \$108 | | |
| m | 6 | \$270 | \$234 | \$198 | \$162 | \$126 | \$90 | |
| s | 7 | \$288 | \$252 | \$216 | \$180 | \$144 | \$108 | \$72 |



4A

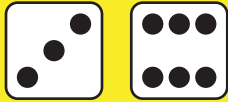
VIRGINIA AVE

VALUE \$160

Y R A U T C N A S E
 D A Z I L O O K L M
 R I V K N G F P K O
 I C R E X I R C M C
 B W X L N U G X D L
 W T K D P U E R N E
 M A R T I N E L I W
 A G O N O X U C O V
 P R A L L Y L F R P
 R E D E E F C Z X J

Team Position

| | | 1 | 2 | 3 | 4 | 5 | 6 | 7 |
|---|---|-------|-------|-------|-------|-------|------|------|
| # | 1 | \$160 | | | | | | |
| | 2 | \$176 | \$144 | | | | | |
| T | 3 | \$192 | \$160 | \$128 | | | | |
| | 4 | \$208 | \$176 | \$144 | \$112 | | | |
| e | 5 | \$224 | \$192 | \$160 | \$128 | \$96 | | |
| | 6 | \$240 | \$208 | \$176 | \$144 | \$112 | \$80 | |
| a | 7 | \$256 | \$224 | \$192 | \$160 | \$128 | \$96 | \$64 |



5A#

RED RIVER STREET

VALUE \$260

These stones are here to see
 On the corner of Holy Three
 And the path of one past Eleven
 Back in the day of ninety seven
 This clue was given to thou
 O Lionel, thy past hath come to now
 For John the strength of valor
 Is to honor those that battle lost
 To those who do now own the pallor
 That death exacts as its cost
 And from them he will inherit
 The spirit of their might
 For prove, he must, by their merit
 That struggle's always right



Team Position

| | | 1 | 2 | 3 | 4 | 5 | 6 | 7 |
|---|---|-------|-------|-------|-------|-------|-------|-------|
| # | 1 | \$260 | | | | | | |
| | 2 | \$286 | \$234 | | | | | |
| T | 3 | \$312 | \$260 | \$208 | | | | |
| e | 4 | \$338 | \$286 | \$234 | \$182 | | | |
| a | 5 | \$364 | \$312 | \$260 | \$208 | \$156 | | |
| m | 6 | \$390 | \$338 | \$286 | \$234 | \$182 | \$130 | |
| s | 7 | \$416 | \$364 | \$312 | \$260 | \$208 | \$156 | \$104 |



7A#

MOUNT BONNELL ROAD

VALUE \$200

In 1939 frontiersman W.A.A. "Bigfoot" Wallace became engaged to be married, but before the happy plans could be carried out, disaster struck. Many residents of Austin became deathly ill from a strange disease, and many of them died. Bigfoot later said the sickness originated among the ranks of the army and spread to the citizens of the town, it's fury only abating after General Sam Houston sent the soldiers away. Bigfoot would have died, too, if it weren't for the careful nursing of his landlady.

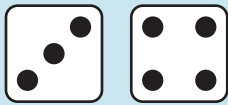


As he began to recover, his luxuriant hair fell out. Not wanting his bride-to-be to see him looking like what he described as a "young buzzard," he retired to the vicinity of Mount Bonnell and lived in a cave, determined to stay there until his hair grew back to its original look. His only visitor was his friend William Fox, who stopped by once a week to collect the game he hunted and bring him necessary supplies from town. On one visit, Fox informed him that "your sweetheart has gone and married another man." "I'm glad she's gone," Bigfoot is said to have replied. "A woman that can't wait until a man's hair grows out, I don't want." Bigfoot always made a dry joke of everything, even death. He never married, however, claiming he didn't have time.

Find the covert location where Bigfoot took refuge while his sweetheart eloped. Scour the environs until you discover what they called the scourge that depilated our hero. Once you've found it, look to your left, seek out the things you least want to count, and count the fewest number of them you need to get to the highest point (without doubling back). Form the final property code by alternately taking a letter from the disease, then a number from the count, and so on.

Team Position

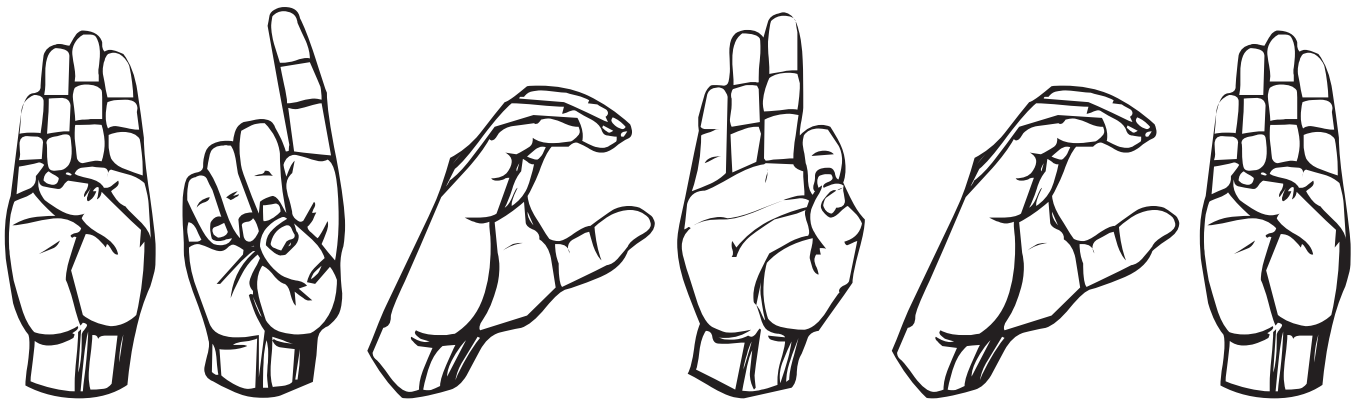
| | | 1 | 2 | 3 | 4 | 5 | 6 | 7 |
|---|---|-------|-------|-------|-------|-------|-------|------|
| # | 1 | \$200 | | | | | | |
| | 2 | \$220 | \$180 | | | | | |
| T | 3 | \$240 | \$200 | \$160 | | | | |
| e | 4 | \$260 | \$220 | \$180 | \$140 | | | |
| a | 5 | \$280 | \$240 | \$200 | \$160 | \$120 | | |
| m | 6 | \$300 | \$260 | \$220 | \$180 | \$140 | \$100 | |
| s | 7 | \$320 | \$280 | \$240 | \$200 | \$160 | \$120 | \$80 |



6A

SOUTH CONGRESS AVE.

VALUE \$100



The code above is easy to solve if you know American Sign Language. If you don't, you'd better seek out the Lord and pray for a sign.

Team Position

| | | 1 | 2 | 3 | 4 | 5 | 6 | 7 |
|---|---|-------|-------|-------|-------|------|------|------|
| # | 1 | \$100 | | | | | | |
| | 2 | \$110 | \$90 | | | | | |
| T | 3 | \$120 | \$100 | \$80 | | | | |
| e | 4 | \$130 | \$110 | \$90 | \$70 | | | |
| a | 5 | \$140 | \$120 | \$100 | \$80 | \$60 | | |
| m | 6 | \$150 | \$130 | \$110 | \$90 | \$70 | \$50 | |
| s | 7 | \$160 | \$140 | \$120 | \$100 | \$80 | \$60 | \$40 |



6A#

CAPITAL OF TEXAS HWY

VALUE \$140

To get to this place you must

SPOT A FECAL TAXI

on the Highway,
but remember it's
a \$2000 fine if you
litter or dump

here

A COMP

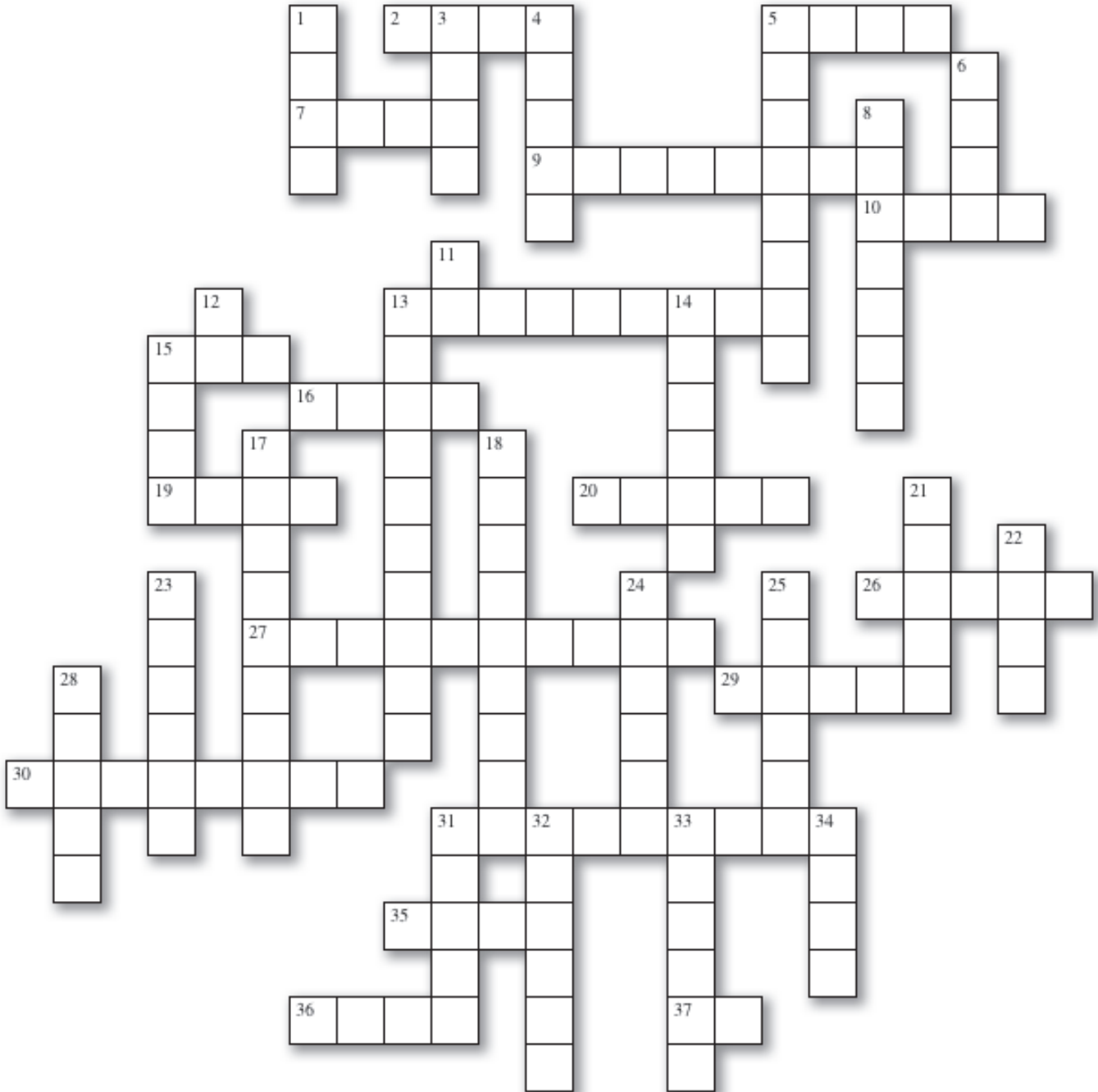
Team Position

| | | 1 | 2 | 3 | 4 | 5 | 6 | 7 |
|---|---|-------|-------|-------|-------|-------|------|------|
| # | 1 | \$140 | | | | | | |
| | 2 | \$154 | \$126 | | | | | |
| T | 3 | \$168 | \$140 | \$112 | | | | |
| e | 4 | \$182 | \$154 | \$126 | \$98 | | | |
| a | 5 | \$196 | \$168 | \$140 | \$112 | \$84 | | |
| m | 6 | \$210 | \$182 | \$154 | \$126 | \$98 | \$70 | |
| s | 7 | \$224 | \$196 | \$168 | \$140 | \$112 | \$84 | \$56 |



7A

NEW YORK AVENUE VALUE \$300



8D 33D 12D 2A 10A 36A 3D 25D 5A 35A 29A 6D 18D 11D 28D 19A 5A 30A 37A 22D
12D 5D 32D 5A 1D 21D 17D 31A 13D 5A 34D 16A 12D 15A 26A 27A 14D 15D 7A



7A

NEW YORK AVENUE VALUE \$300

ACROSS

- 2. Smells as Sweet by Any #7 Across
- 5. Previous to Present
- 7. Handle
- 9. Practices Handed Down From the Past by Tradition
- 10. What #15 Across Is Made Of
- 13. Cop
- 15. Inverse of Exponentiation
- 16. Location to do #34 Down
- 19. Lecture or Colloquium
- 20. Envy's Color
- 26. Kind of Fever
- 27. Relating to #5 Across
- 29. #24 Down's Office
- 30. Part of a Cut Gem Below the Girdle
- 31. Must Consume in the 4 Challenges
- 35. #13 Across's Hoedown
- 36. Monopoly Space: Free ____ing
- 37. Opposite of Other Direction

DOWN

- 1. Laziest Band Name Ever
- 3. Flipped or Done
- 4. Less Than Ten, More Than One
- 5. Affable
- 6. #4 Minus Eight
- 8. So Nice, Named Twice
- 11. Bond Doctor
- 12. Homonym Cubed is #4
- 13. Not Allowed
- 14. Sign or Emblem
- 15. First with J.C.
- 17. Jeff's Favorite #31 Across
- 18. D.W. Griffith's Colossal Spectacle Lacked This
- 21. The Lazy Prefer to Sit Than This
- 22. Manor Ding Site
- 23. Location of 2007 Rally
- 24. Grows for a Living
- 25. Game Name or Pool Equipment
- 28. Litter Where it Should Be
- 31. No Lights Or All Pigments
- 32. Hollow
- 33. Not Drive, Road or Boulevard
- 34. Sink or ____

Team Position

| | | 1 | 2 | 3 | 4 | 5 | 6 | 7 |
|---|---|-------|-------|-------|-------|-------|-------|-------|
| # | 1 | \$300 | | | | | | |
| | 2 | \$330 | \$270 | | | | | |
| T | 3 | \$360 | \$300 | \$240 | | | | |
| e | 4 | \$390 | \$330 | \$270 | \$210 | | | |
| a | 5 | \$420 | \$360 | \$300 | \$240 | \$180 | | |
| m | 6 | \$450 | \$390 | \$330 | \$270 | \$210 | \$150 | |
| s | 7 | \$480 | \$420 | \$360 | \$300 | \$240 | \$180 | \$120 |



4#

GUADALUPE STREET

VALUE \$60

Take a **second** to discover what one of the most **magnetic** personalities in **Austin** has in **store** for you. If you need help, the staff might respond to a silly song; it is a small **price** to pay.

Sung to the tune of "The Eyes of Texas"

The eyes of Leslie are upon you
All the live long day!
The thighs of Leslie will alarm you
But you cannot turn away!
Do not think you can escape him
At night or early in the morn'.
The eyes of Leslie are upon you
Till Gabriel blows his horn!

The thong of Leslie is enormous
That's what the locals say.
Someone really should have warned us
Now it's too late to turn away!
Don't you think he should be dressing
In pants instead of tights so torn
The thong of Leslie is enormous
He should be doing porn!

Team Position

| | | 1 | 2 | 3 | 4 | 5 | 6 | 7 |
|---|---|------|------|------|------|------|------|------|
| # | 1 | \$60 | | | | | | |
| | 2 | \$66 | \$54 | | | | | |
| T | 3 | \$72 | \$60 | \$48 | | | | |
| e | 4 | \$78 | \$66 | \$54 | \$42 | | | |
| a | 5 | \$84 | \$72 | \$60 | \$48 | \$36 | | |
| m | 6 | \$90 | \$78 | \$66 | \$54 | \$42 | \$30 | |
| s | 7 | \$96 | \$84 | \$72 | \$60 | \$48 | \$36 | \$24 |



4A

BARTON SQUARE

VALUE \$140

We already know this clue really sucks,
 no walk in the park for one-forty bucks.
 Its just plain not right, being sent to a mall
 on this holiday weekend not long before fall.
 In order to find this property's code
 start paying attention to this very ode.
 The wise travel forward not counter or back
 Don't step inside unless you need slack.
 Wisdom is found upon the direct'ry,
 but seek that help only if necess'ry.
 Banana Republic will reveal a lot:
 but it will just get you to near the right spot.
 From that place you must rotate and gawk
 be on the lookout for Falling Rock.

| | | Team Position | | | | | | |
|---|---|---------------|-------|-------|-------|-------|------|------|
| | | 1 | 2 | 3 | 4 | 5 | 6 | 7 |
| # | 1 | \$140 | | | | | | |
| | 2 | \$154 | \$126 | | | | | |
| T | 3 | \$168 | \$140 | \$112 | | | | |
| e | 4 | \$182 | \$154 | \$126 | \$98 | | | |
| a | 5 | \$196 | \$168 | \$140 | \$112 | \$84 | | |
| m | 6 | \$210 | \$182 | \$154 | \$126 | \$98 | \$70 | |
| s | 7 | \$224 | \$196 | \$168 | \$140 | \$112 | \$84 | \$56 |



4A

BARTON SQUARE

VALUE \$140

We already know this clue really sucks,
 no walk in the park for one-forty bucks.
 Its just plain not right, being sent to a mall
 on this holiday weekend not long before fall.
 In order to find this property's code
 start paying attention to this very ode.
 The wise travel forward not counter or back
 Don't step inside unless you need slack.
 Wisdom is found upon the direct'ry,
 but seek that help only if necess'ry.
 Banana Republic will reveal a lot:
 but it will just get you to near the right spot.
 From that place you must rotate and gawk
 be on the lookout for **Falling Rock**.

Team Position

| | | 1 | 2 | 3 | 4 | 5 | 6 | 7 |
|---|---|-------|-------|-------|-------|-------|------|------|
| # | 1 | \$140 | | | | | | |
| | 2 | \$154 | \$126 | | | | | |
| T | 3 | \$168 | \$140 | \$112 | | | | |
| e | 4 | \$182 | \$154 | \$126 | \$98 | | | |
| a | 5 | \$196 | \$168 | \$140 | \$112 | \$84 | | |
| m | 6 | \$210 | \$182 | \$154 | \$126 | \$98 | \$70 | |
| s | 7 | \$224 | \$196 | \$168 | \$140 | \$112 | \$84 | \$56 |



6A

ORIENTAL AVENUE

VALUE \$240

鳥

Bird

Far to the north past the old **Wagon Trail** and the **Prairie** to the East of the **Plains**, in the Center of Chinatown you'll find Oriental Avenue. On one side lies a busy merchant district, while on the other stands a temple with six mighty columns. To solve the riddle of the temple, you'll need to follow an old tale:

龍

Dragon

目

Eye

T'ai-wu Fu-jên, the human daughter of Hsi Wang Mu, travelled to the Moon where her mother's palace was situated. She mounted a dragon, and all along the course left a streak of light in her wake half as bright as the sun itself. One day the Emperor Yao, from the top of Ch'ing-yün Shan, saw this track of light, and asked Shên the cause of this unusual phenomenon. The latter mounted the current of luminous air, and letting it carry him whither it listed, found himself on Lo-fou Shan, in front of the door of the mountain, which was guarded by a great spiritual monster. On seeing Shên this creature, a bird of gigantic size known as a phoenix, attacked. One arrow to the eye, however, settled the matter. The beast fled, the door opened, and a lady on a horse followed by ten attendants presented herself. She was no other than Chin Mu herself. Shên, having saluted her and explained the object of his visit, was admitted to the goddess's palace, and royally entertained.

馬

Horse

人

Human

月

Moon

母

Mother

山

Mountain

牛

Ox

"I have heard," said Shên to the noble woman, "that you possess the pills of immortality; I beg you to give me one or two." "You are a well-known architect," replied Chin Mu; "please build me a palace near this mountain." Together they went to inspect a celebrated site known as Pai-yü-kuei Shan, 'White Jade-tortoise Mountain,' and fixed upon it as the location of the new abode of the goddess. Shên had all the spirits of the mountain to work for him. The walls were built of jade, sweet-smelling wood was used for the framework and wainscoting, the roof was of glass, the steps of agate. In a fortnight's time sixteen palace buildings stretched magnificently along the side of the mountain. Chin Mu gave to the architect a wonderful pill which would bestow upon him immortality as well as the faculty of being able at will to fly through the air. "But," she said, "it must not be eaten now: you must first go through a twelve months' preparatory course of exercise and diet of only rain water and rice, without which the pill will not have all the desired results." Shên thanked the goddess, took leave of her, and, returning to the Emperor, related to him all that had happened.

鳳

Phoenix

雨

Rain

禾

Rice

羊

Sheep

日

Sun

龜

Tortoise

水

Water

女

Woman

木

Wood

Team Position

| | | 1 | 2 | 3 | 4 | 5 | 6 | 7 |
|---|---|-------|-------|-------|-------|-------|-------|------|
| # | 1 | \$240 | | | | | | |
| | 2 | \$264 | \$216 | | | | | |
| T | 3 | \$288 | \$240 | \$192 | | | | |
| e | 4 | \$312 | \$264 | \$216 | \$168 | | | |
| a | 5 | \$336 | \$288 | \$240 | \$192 | \$144 | | |
| m | 6 | \$360 | \$312 | \$264 | \$216 | \$168 | \$120 | |
| s | 7 | \$384 | \$336 | \$288 | \$240 | \$192 | \$144 | \$96 |



4A

BARTON SQUARE

VALUE \$140

We already know this clue really sucks,
 no walk in the park for one-forty bucks.
 Its just plain not right, being sent to a mall
 on this holiday weekend not long before fall.
 In order to find this property's code
 start paying attention to this very ode.
 The wise travel forward not counter or back
 Don't step inside unless you need slack.
 Wisdom is found upon the direct'ry,
 but seek that help only if necess'ry.
 Banana Republic will reveal a lot:
 but it will just get you to near the right spot.
 From that place you must rotate and gawk
 be on the lookout for **Falling Rock**.

Team Position

| | | 1 | 2 | 3 | 4 | 5 | 6 | 7 |
|---|---|-------|-------|-------|-------|-------|------|------|
| # | 1 | \$140 | | | | | | |
| | 2 | \$154 | \$126 | | | | | |
| T | 3 | \$168 | \$140 | \$112 | | | | |
| e | 4 | \$182 | \$154 | \$126 | \$98 | | | |
| a | 5 | \$196 | \$168 | \$140 | \$112 | \$84 | | |
| m | 6 | \$210 | \$182 | \$154 | \$126 | \$98 | \$70 | |
| s | 7 | \$224 | \$196 | \$168 | \$140 | \$112 | \$84 | \$56 |