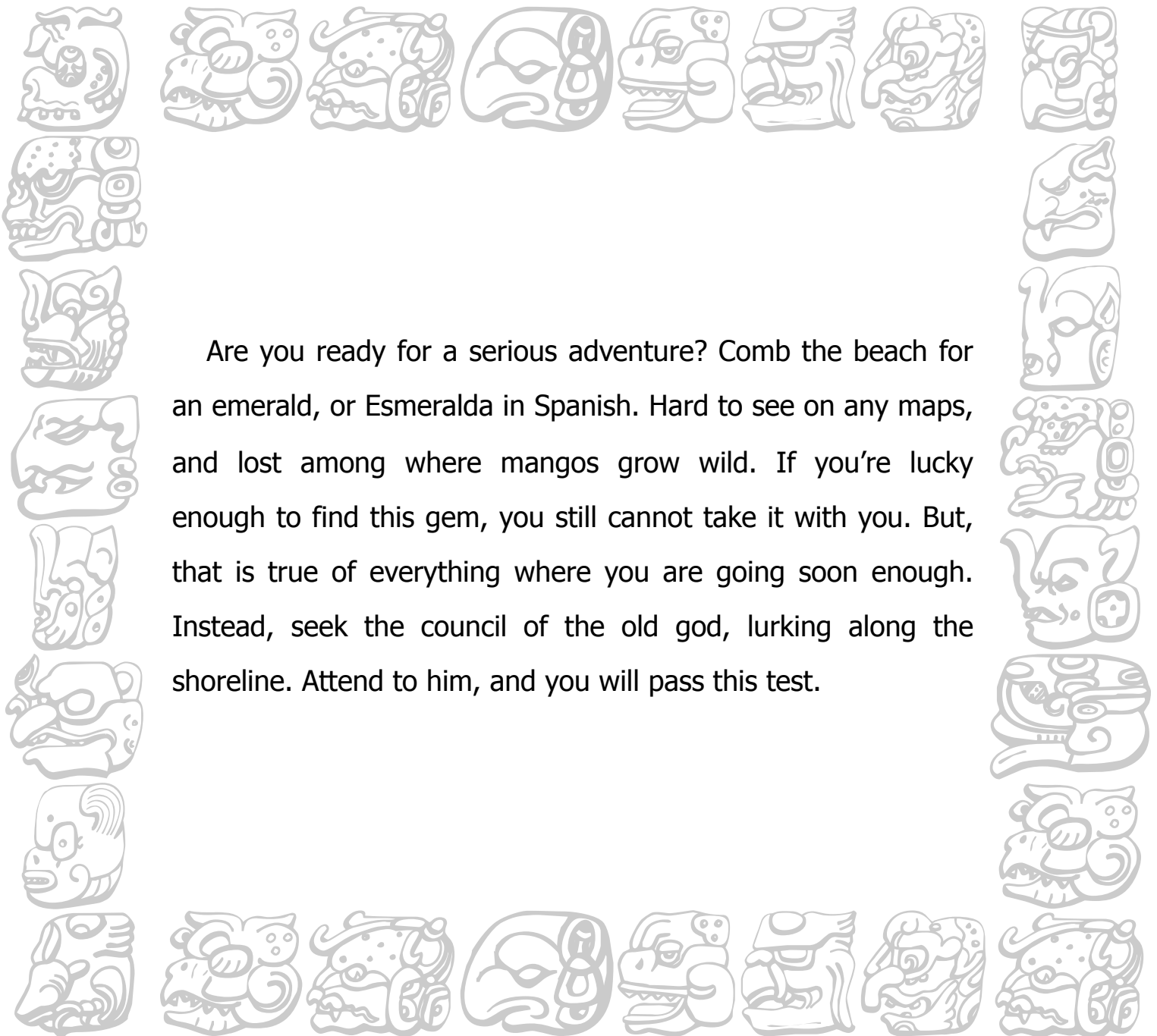
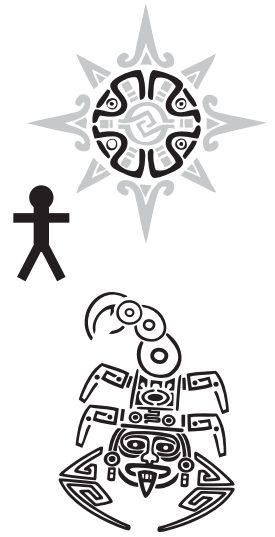


# TEST OF VITALITY

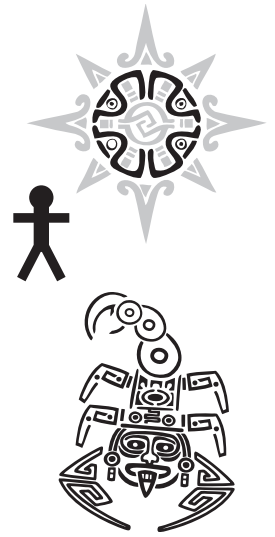
Ix, represents the powerful Jaguar. One of the most enigmatic daysigns in the Tzolk'in, Ix is the nawal of nature and Mayan altars. It embodies spirit, force, energy and vitality, and it is recommended to give thanks for special sacred places we create in our lives, on this day. Ix's animal totem is the jaguar.



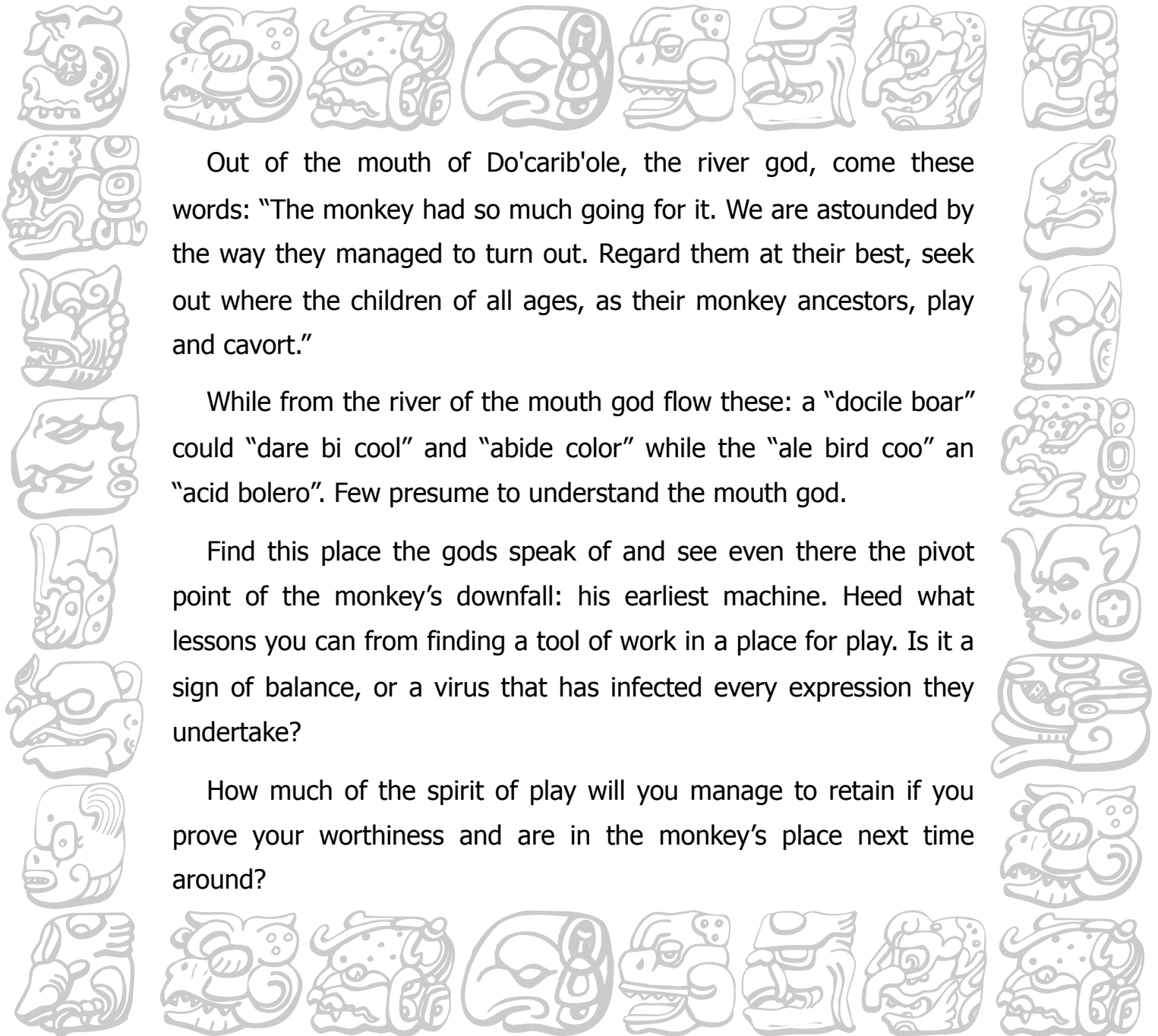
Are you ready for a serious adventure? Comb the beach for an emerald, or Esmeralda in Spanish. Hard to see on any maps, and lost among where mangos grow wild. If you're lucky enough to find this gem, you still cannot take it with you. But, that is true of everything where you are going soon enough. Instead, seek the council of the old god, lurking along the shoreline. Attend to him, and you will pass this test.

# CHUWEN

## MEASURE OF INSOURCIANCE



Chuwen, is the daysign of the Monkey. This is the nawal of all arts and the artists—and as such, Chuwen is the patron daysign of all creative expression, endeavor and achievement. It is often referred to as the "weaver of time," and is considered to be the best day to be married.



Out of the mouth of Do'carib'ole, the river god, come these words: "The monkey had so much going for it. We are astounded by the way they managed to turn out. Regard them at their best, seek out where the children of all ages, as their monkey ancestors, play and cavort."

While from the river of the mouth god flow these: a "docile boar" could "dare bi cool" and "abide color" while the "ale bird coo" an "acid bolero". Few presume to understand the mouth god.

Find this place the gods speak of and see even there the pivot point of the monkey's downfall: his earliest machine. Heed what lessons you can from finding a tool of work in a place for play. Is it a sign of balance, or a virus that has infected every expression they undertake?

How much of the spirit of play will you manage to retain if you prove your worthiness and are in the monkey's place next time around?

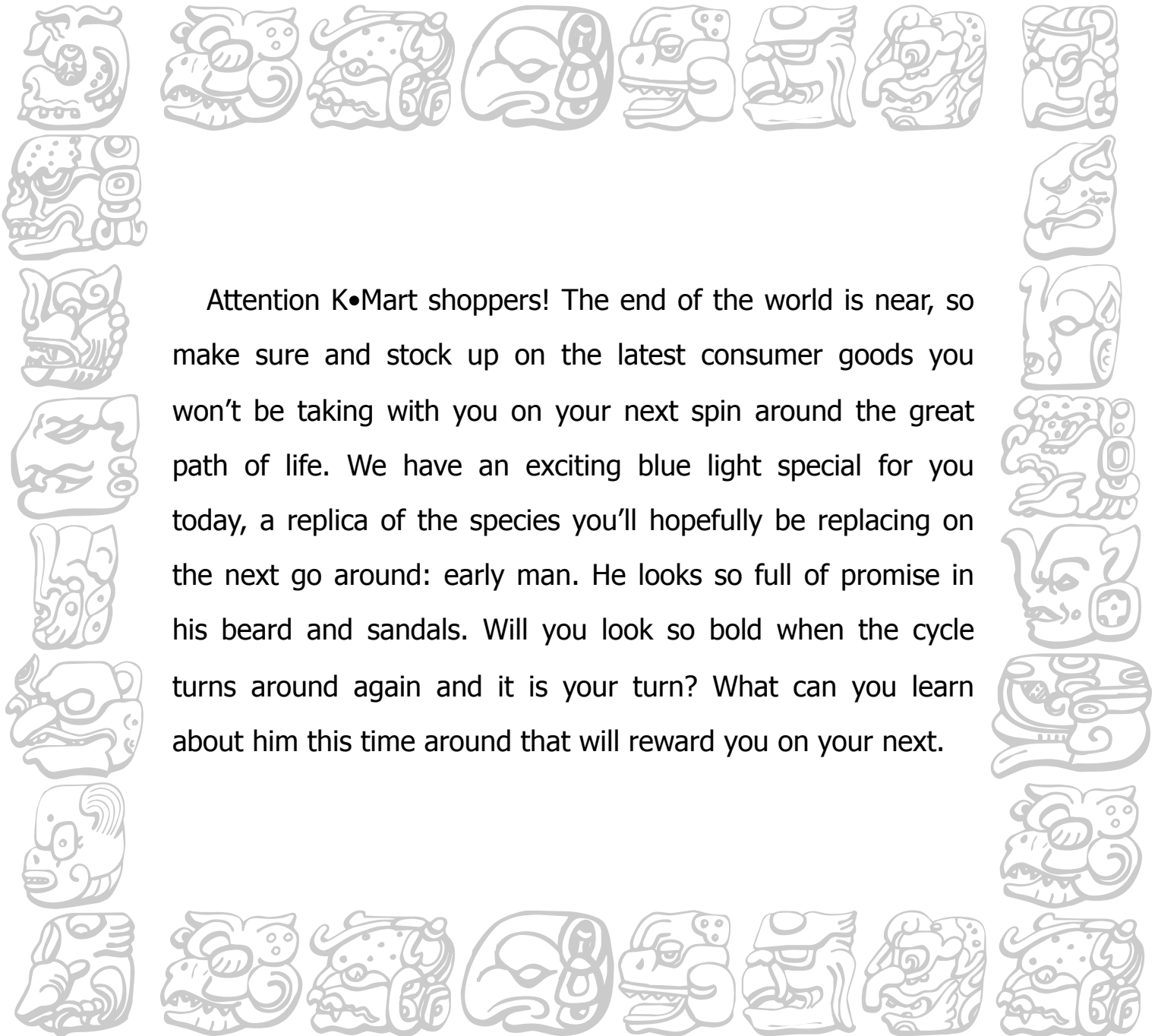


# CHICKCHAN'



## TEST OF EDUCATION

Chickchan', is the Feathered Serpent. This daysign is also the nawal of the creation of humans and of education and training. Chickchan' has a strong connection to koyopa, the inner fire also known as kundalini, and thus provides a positive energy to build both physical and spiritual strength. Its animal totem is the serpent.



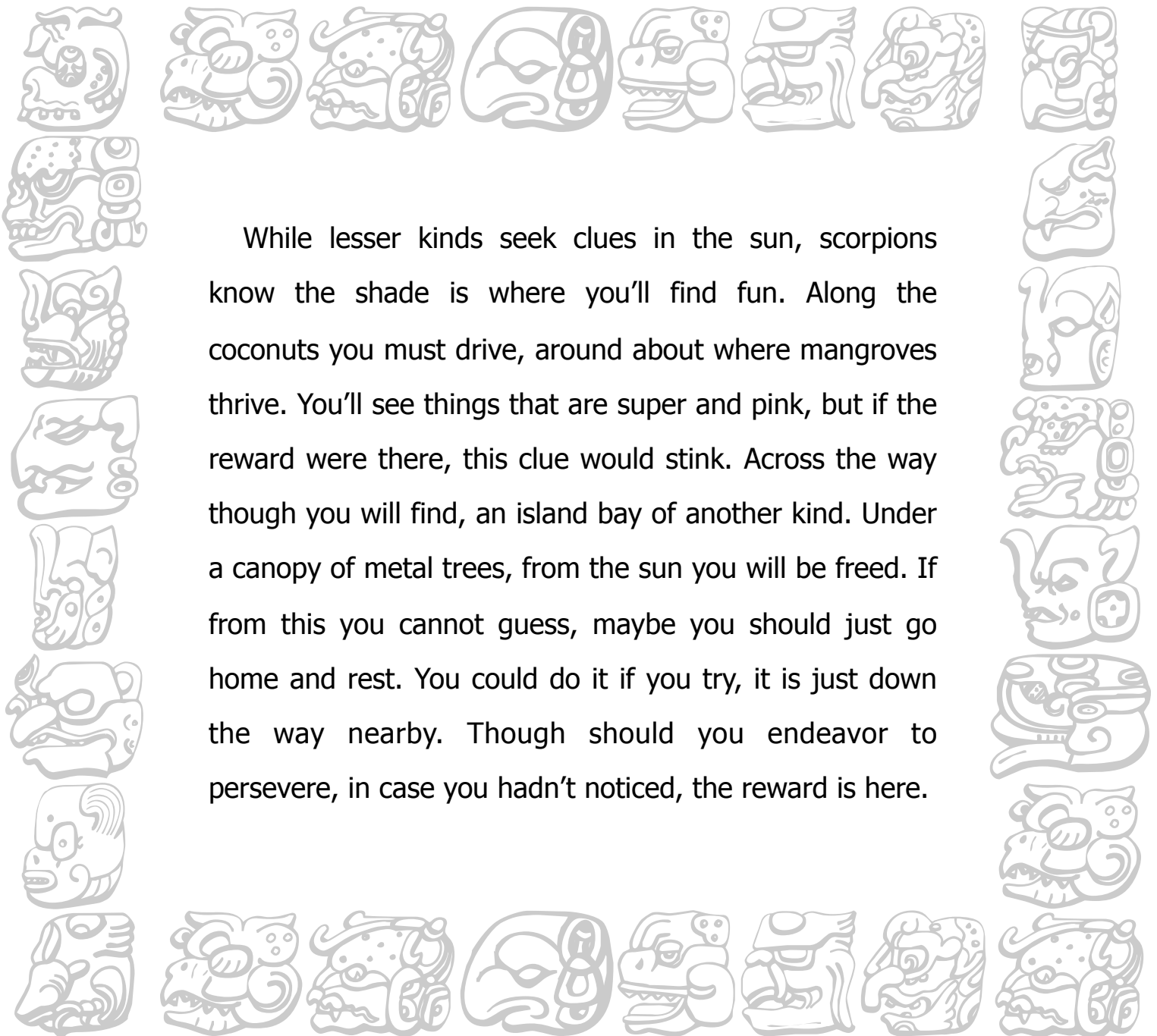
Attention K•Mart shoppers! The end of the world is near, so make sure and stock up on the latest consumer goods you won't be taking with you on your next spin around the great path of life. We have an exciting blue light special for you today, a replica of the species you'll hopefully be replacing on the next go around: early man. He looks so full of promise in his beard and sandals. Will you look so bold when the cycle turns around again and it is your turn? What can you learn about him this time around that will reward you on your next.

# B'EN



## REMEMBRANCE OF THE EARTH

B'en, represents the Reed or Corn. It is the nawal of the home and children; on this day we give thanks for our home, our family and for the nourishment we are provided by the planet. Ben's animal totems are the armadillo and the bee.

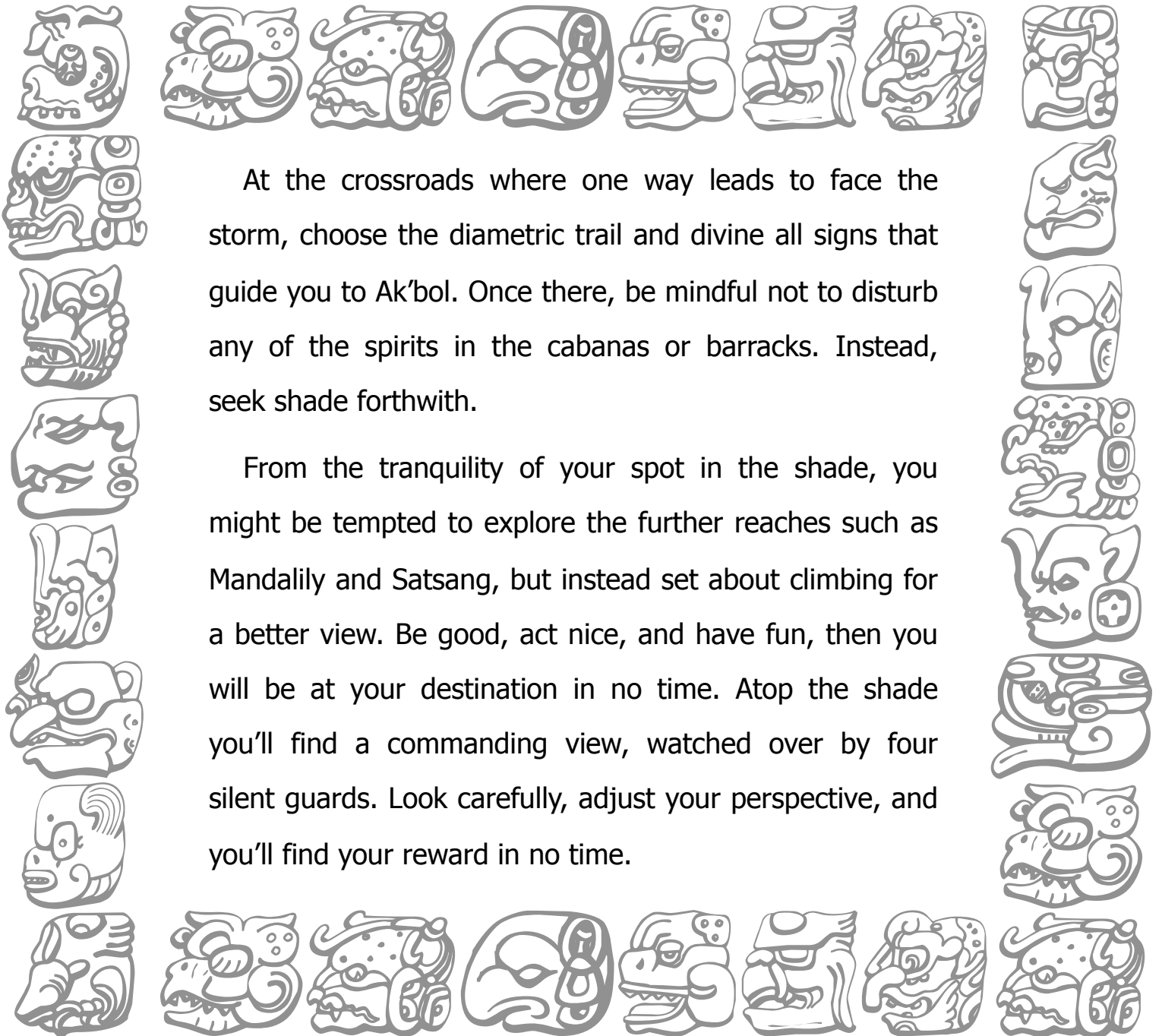


While lesser kinds seek clues in the sun, scorpions know the shade is where you'll find fun. Along the coconuts you must drive, around about where mangroves thrive. You'll see things that are super and pink, but if the reward were there, this clue would stink. Across the way though you will find, an island bay of another kind. Under a canopy of metal trees, from the sun you will be freed. If from this you cannot guess, maybe you should just go home and rest. You could do it if you try, it is just down the way nearby. Though should you endeavor to persevere, in case you hadn't noticed, the reward is here.

# Ak'bol

## CLARITY OF PERSPECTIVE

Ak'bol, is the daysign of Vision. It is the nawal of clarity or light, and symbolizes both dawn and daylight. This is a day particularly propitious for love and marriage, and for the ability to think and act with perfect clarity. The animal totems of Ak'b'al are the fawn and the macaw.



At the crossroads where one way leads to face the storm, choose the diametric trail and divine all signs that guide you to Ak'bol. Once there, be mindful not to disturb any of the spirits in the cabanas or barracks. Instead, seek shade forthwith.

From the tranquility of your spot in the shade, you might be tempted to explore the further reaches such as Mandalily and Satsang, but instead set about climbing for a better view. Be good, act nice, and have fun, then you will be at your destination in no time. Atop the shade you'll find a commanding view, watched over by four silent guards. Look carefully, adjust your perspective, and you'll find your reward in no time.